



# COMPACT MX

with innovative sustainable technology platform recognized by  
ISPO TOP OF INNOVATION AWARD



## Breakthrough Innovations in Thermal Insulation

Date issued: 2021 03 26

### APPLICATIONS (TYPICAL)

Apparel, Footwear, Gloves, Ski pants, Blankets, etc., requiring thin profile with high thermal efficiency and light weight

### FIBER COMPOSITION

100% Polypropylene or Polypropylene / PET 65/35

### FLAMMABILITY

Class 1, Normal according to US Federal Flammable Fabrics Act Procedure in 16 CFR Part 1610.

### PERFORMANCE FEATURES

Proprietary DRI-CAVE™ Technology for dry comfort

Proprietary LRTD™ (Long Range Thermal Dynamics) Technology for optimum warmth

Thin profile with high thermal efficiency (compression resistant)

Water resistant / Moisture management / Wind proof / Quick drying

Light weight / Warm even when damp

Easy maintenance (Home wash, etc)



### TECHNICAL DATA (TYPICAL VALUES)

Product Code	Basis Weight (gsm)	Product Variations	Roll Width (in/cm)	Thickness		CLO
				Inch	cm	
HMX-CR40	40	HMX-CRS55/HMX-CRD70	60/152	0.16 ~ 0.20	0.4 ~ 0.5	0.8 ~ 1.0
HMX-CR60	60	HMX-CRS75/HMX-CRD90	60/152	0.20 ~ 0.24	0.5 ~ 0.6	1.2 ~ 1.5
HMX-CR80	80	HMX-CRS95/HMX-CRD110	60/152	0.24 ~ 0.31	0.6 ~ 0.8	1.5 ~ 1.7
HMX-CR100	100	HMX-CRS115/HMX-CRD130	60/152	0.31 ~ 0.39	0.8 ~ 1.0	1.7 ~ 2.0
HMX-CR150	150	HMX-CRS165/HMX-CRD180	60/152	0.47 ~ 0.59	1.2 ~ 1.5	2.2 ~ 2.5
HMX-CR200	200	HMX-CRS215/HMX-CRD230	60/152	0.63 ~ 0.71	1.6 ~ 1.8	2.9 ~ 3.2

\* All data presented above may vary. Please contact your HEAT-MX™ sales representative for most up-to-date information.

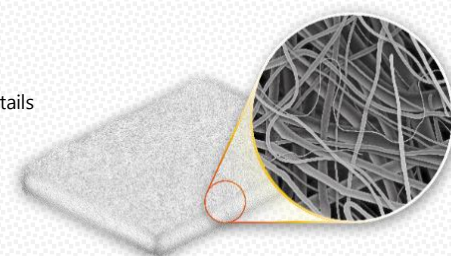
\*\* Product codes which do not contain "R", e.g., C100/CS115/CD130 present similar properties.

\*\*\* 'S' represents Single scrim and 'D' represents Double scrim.

\*\*\*\* Other weight products, e.g., 200gsm+ available up on request. Ask your sales representative for more details

#### TEST METHODS:

Thickness: ASTM D 5736 @ 0.002 psi, CLO: ISO11092:2014, WVTR: ASTM E96/E96M-16



### CONSTRUCTION GUIDELINES

COMPACT MX Insulation products may be free-hung in edge-stabilized construction. Maximum distance between stitched lines may vary depending on various factors such as types of shell & lining fabrics, stitching density, etc. Please ask the sales representative of HEAT-MX™ in your region to find out more. Quilting and/or adhesive lamination methods may be used for as needed. For any use of the products outside conventional construction methods and/or in combination of unusual material practiced and recognized by the industry, please consult the sales representative of HEAT-MX™ products in your region. Avoid high temperature or high pressure in the course of manufacturing to attain optimum performance.

### CARE INSTRUCTIONS

GOODS made with HEAT-MX™ insulation material may be home laundered and/or dry cleaned. Follow care instructions provided by the manufacturer or brand of the finished goods.

EXPERIENCE THE EXCELLENCE



PROUDLY CANADIAN

PROUDLY CANADIAN



www.heat-mx.com



# COMPACT MX

with innovative sustainable technology platform recognized by  
ISPO TOP OF INNOVATION AWARD

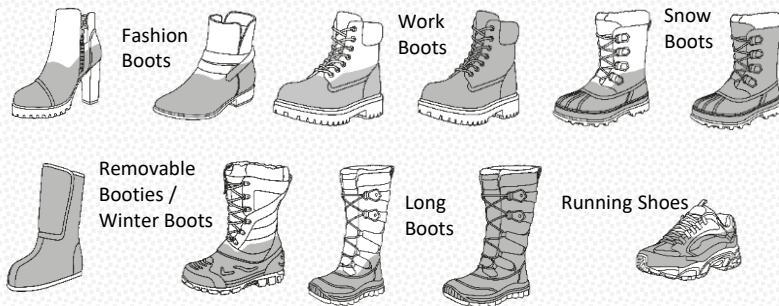


Breakthrough Innovations in Thermal Insulation

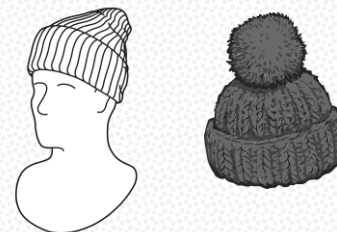
Date issued: 2021 03 26

## PRODUCT USAGE EXAMPLES\*

### FOOTWEAR EXAMPLES



### KNITTED HAT EXAMPLES



### CLOTHING EXAMPLES



### FOOD BAG EXAMPLES



## EXCEPTIONAL PERFORMANCE FEATURES & SOCIAL / ENVIRONMENTAL BENEFITS



Note - Some performance features are specific to a certain product type (product code) and optional. Please contact your sales representative for more details

\* Product Usage Guidelines are based on entire area applications of HEAT-MX™ products unless otherwise expressed as per Footwear examples, but may vary depending on specific applications. Contact your sales representative for the approval in case of exceptions from the application methods indicated in this document.

Disclaimer: All marketing assets including, not limited to, hang tags, labels, catalog, sample card, technical data sheet, etc., may change without notice. Marketing claims made towards consumers by the customers of HEAT-MX™ products and technologies are not responsibility of HEAT-MX™ Company. Any marketing claims to be made by other parties in association with HEAT-MX™ products and technologies must be approved by HEAT-MX™ Company. The HEAT-MX™ Company shall be neither liable nor responsible for any consequences associated with any and all changes of the marketing claims, assets, etc.

WARRANTY CLAUSES: In the event any HEAT-MX™ product is found to be defective in material, workmanship or not in conformance with any express warranty for a specific purpose, the only obligation of the HEAT-MX™ Company and your exclusive remedy shall be to repair, replace or refund the purchase price of such parts or products upon timely notification thereof and substantiation that the product has been stored, maintained and used in accordance with the instructions of the HEAT-MX™ Company. EXCLUSIONS TO WARRANTY: THIS WARRANTY IS EXCLUSIVE AND IS IN LIEU OF ANY IMPLIED WARRANTY OR CONDITION OF MERCHANTABILITY, FITNESS FOR A PARTICULAR PURPOSE OR OTHER WARRANTY OR CONDITION OF QUALITY, EXCEPT OF TITLE AND AGAINST PATENT INFRINGEMENT. LIMITATION OF LIABILITY: Except as provided above, the HEAT-MX™ Company shall not be liable or responsible for any loss or damage, whether direct, indirect, incidental, special or consequential, arising out of the sale, use or misuse of HEAT-MX™ products or the user's inability to use such products. THE REMEDIES SET FORTH HEREIN ARE EXCLUSIVE. The general terms and conditions of the HEAT-MX™ Company also apply to the sale of this product. The HEAT-MX™ Company may change the product, specifications and availability of the product as improvements are made: therefore, user should contact the HEAT-MX™ Company for latest information before specifying the product. All HEAT-MX™ products are produced within strict dimensional and weight tolerance specifications. However, changes in environment and other factors may cause the final dimensions and/or bag weights to shift, shrink, or otherwise change up to a maximum of ±4% during handling or shipment. Please allow products to recover 24 hours after vacuum pack is removed.